

PART OF THE SW 1/4, SEC. 10, T.5N., R.1W., S.L.B. & M.
FOREST GREEN ESTATES SUBDIVISION NO. 4

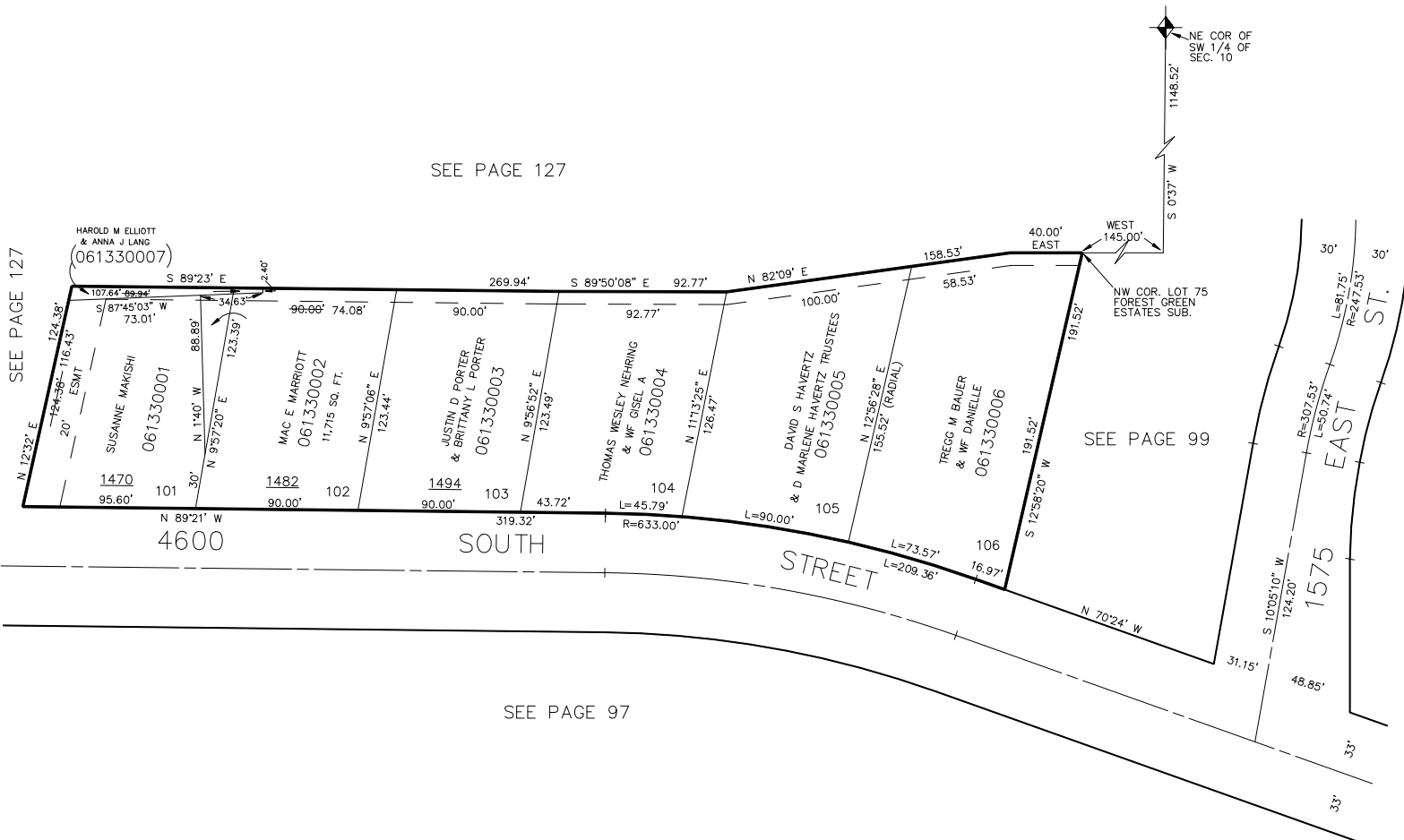
133

IN OGDEN CITY
 SCALE 1" = 50'

TAXING UNIT: 25

SEE PAGE 127

SEE PAGE 127



7" UTILITY & DRAINAGE EASEMENTS EACH
 SIDE OF PROPERTY LINES AS INDICATED
 BY DASHED LINES EXCEPT AS OTHERWISE
 SHOWN.

FOR COMPLETE ENG DATA SEE
 ORIGINAL DEDICATION PLAT IN
 BOOK 17, PAGE 10 OF RECORDS.